

International Journal of Medicine and Medical Sciences

Volume 9 Number 1 January, 2017

ISSN 2006-9723



*Academic
Journals*

ABOUT IJMMS

The **International Journal of Medicine and Medical Sciences** is published monthly (one volume per year) by Academic Journals.

The **International Journal of Medicine and Medical Sciences (IJMMS)** provides rapid publication (monthly) of articles in all areas of Medicine and Medical Sciences such as:

Clinical Medicine: Internal Medicine, Surgery, Clinical Cancer Research, Clinical Pharmacology, Dermatology, Gynaecology, Paediatrics, Neurology, Psychiatry, Otorhinolaryngology, Ophthalmology, Dentistry, Tropical Medicine, Biomedical Engineering, Clinical Cardiovascular Research, Clinical Endocrinology, Clinical Pathophysiology, Clinical Immunology and Immunopathology, Clinical Nutritional Research, Geriatrics and Sport Medicine

Basic Medical Sciences: Biochemistry, Molecular Biology, Cellular Biology, Cytology, Genetics, Embryology, Developmental Biology, Radiobiology, Experimental Microbiology, Biophysics, Structural Research, Neurophysiology and Brain Research, Cardiovascular Research, Endocrinology, Physiology, Medical Microbiology

Experimental Medicine: Experimental Cancer Research, Pathophysiology, Immunology, Immunopathology, Nutritional Research, Vitaminology and Etiology

Preventive Medicine: Congenital Disorders, Mental Disorders, Psychosomatic Diseases, Addictive Diseases, Accidents, Cancer, Cardiovascular Diseases, Metabolic Disorders, Infectious Diseases, Diseases of Bones and Joints, Oral Preventive Medicine, Respiratory Diseases, Methods of Epidemiology and Other Preventive Medicine

Social Medicine: Group Medicine, Social Paediatrics, Medico-Social Problems of the Youth, Medico-Social Problems of the Elderly, Rehabilitation, Human Ecology, Environmental Toxicology, Dietetics, Occupational Medicine, Pharmacology, Ergonomy, Health Education, Public Health and Health Services and Medical Statistics The Journal welcomes the submission of manuscripts that meet the general criteria of significance and scientific excellence. Papers will be published approximately one month after acceptance. All articles published in IJMMS are peer-reviewed.

Contact

Editorial Office: ijmms@academicjournals.org

Desk: helpdesk@academicjournals.org

Website: <http://www.academicjournals.org/journal/IJMMS>

Submit manuscript online <http://ms.academicjournals.me/>

Editors

Dr. J. Ibekwe

*Acting Editor-in-chief,
International Journal of Medicine and Medical
Sciences Academic Journals
E-mail: ijmms.journals@gmail.com
<http://www.academicjournals.org/ijmms>*

Afrozul Haq

*Editor, Laboratory Medicine
Department of Laboratory Medicine
Sheikh Khalifa Medical City
P.O. Box 51900, ABU DHABI
United Arab Emirates*

Editorial Board

Chandrashekhar T. Sreeramareddy

*Department of Community Medicine,
P O Box No 155, Deep Heights
Manipal College of Medical Sciences,
Pokhara,
Nepal*

Sisira Hemananda Siribaddana

*259, Temple Road, Thalpathpitiya,
Nugegoda, 10250
Sri Lanka*

Dr. santi M. Mandal

*Internal Medicine
UTMB, Galveston, TX,
USA*

Konstantinos Tziomalos

*Department of Clinical Biochemistry
(Vascular Prevention Clinic),
Royal Free Hospital Campus,
University College Medical School, University College
London, London,
United Kingdom*

Cyril Chukwudi Dim

*Department of Obstetrics & Gynaecology
University of Nigeria Teaching Hospital (UNTH)
P.M.B. 01129, Enugu. 400001,
Nigeria*

Mojtaba Salouti

*School of Medical and Basic Sciences,
Islamic Azad University- Zanjan,
Iran*

Imtiaz Ahmed Wani

*Srinagar Kashmir, 190009,
India*

Professor Viroj Wiwanitkit

*Wiwanitkit House, Bangkhae,
Bangkok
Thailand 10160*

Dr. Srinivas Koduru

*Dept of Clinical Sciences
Collage of Health Sciences
University of Kentucky
Lexington USA*

Weiping Zhang

*Department of Oral Biology
Indiana University School of Dentistry
1121 West Michigan Street, DS 271
Indianapolis, IN 46202
USA*

Lisheng XU

*Ho Sin Hang Engineering Building
Department of Electronic Engineering
The Chinese University of Hong Kong
Shatin, N.T. Hong Kong,
China*

Dr. Mustafa Sahin

*Department of Endocrinology and Metabolism
Baskent University,
Ankara,
Turkey*

Dr. Harshdeep Joshi

*Maharishi Markandeshwar
Institute of Medical Sciences and Research
Ambala, (Haryana).
India.*

ARTICLES

Medical waste management and disposal practices of health facilities in Kumbo East and Kumbo West health districts	1
Lanyuy Gillian Dzekashu, Jane Francis Akoachere and Wilfred Fon Mbacham	

Full Length Research Paper

Medical waste management and disposal practices of health facilities in Kumbo East and Kumbo West health districts

Lanyuy Gillian Dzekashu^{1,4}, Jane Francis Akoachere² and Wilfred Fon Mbacham^{1,3*}

¹Department of Health Economics Policy and Management, Catholic University of Cameroon, Bamenda, Cameroon.

²Department of Microbiology and Parasitology, University of Buea, Cameroon.

³University of Yaounde I, Public Health Biotechnology, Cameroon.

⁴Ministry of Secondary Education, Cameroon.

Received 10 October, 2016: Accepted 28 November, 2016

The provision of healthcare generates waste which can be detrimental to health and the environment. Management of healthcare waste is still a challenge in developing countries as practices, capacities and policies on waste disposal are grossly inadequate and require intensification. With the growing trend of biomedical services in Kumbo Cameroon, the medical waste management practices in this area was investigated to generate data that could guide policy in planning for an effective and sustainable waste management program. A qualitative cross sectional study was conducted in 30 of the 52 health facilities in study area. Participating facilities were selected by convenience sampling and personnel by random sampling. Data was collected using questionnaires, interviews and direct field observations and results analyzed using SPSS V 17.0. P-values <0.05 were considered significant. Participants aware of the existence of a national policy guide on waste management were mostly administrators (66.7%). Only 2 (6.6%) health facilities had a copy of this document. None of the participating facilities kept records of their medical waste management practices. All participants were aware of the health risk of healthcare waste. Use of PPE varied among participants and was highest among employed waste handlers (EWH) (100%) and laboratory technicians (100%) while the lowest (69%) was among pharmacy attendants. Gloves were the most commonly used PPE. Most of the EWH (55.6%) used examination gloves which was inappropriate. Not all participants segregated or disinfected waste. Waste bins were not colour-coded and all facilities had appropriate safety boxes for sharps. In 86.7% of health facilities, waste disposal was by burning in pits located within 400 m away from the facility. These pits were not protected from scavengers. Only 4 facilities had incinerators and all did not meet the required standards, as none was equipped with a scrubber. Even after segregation at the point of generation, wastes were mixed at the point of final disposal. Waste management practices in study site did not meet standard practices. There is an urgent need for proper medical waste management in Kumbo East and Kumbo West to minimise threats to human health and the environment. Regular supervision and enforcement of policy on medical waste management is paramount.

Key words: Medical waste, medical waste management, disposal, Kumbo.

INTRODUCTION

Medical care is vital for life and health, but waste generated from medical activities has become a serious

concern because of its composition. It has a high potential of carrying micro-organisms that can infect individuals exposed to it, as well as the community at large if it is not properly disposed (Babanyara et al. 2013). Medical waste is the second most hazardous waste after radioactive waste. Being hazardous and infectious, medical waste also pose serious threats to public and environmental health as it may pollute air and contaminate soil and water sources. Thus, to protect human and environmental health, healthcare waste requires specific treatment and management prior to its final disposal. Enormous effort is needed to establish the provision of effective and universal healthcare and with it the safe and effective disposal of clinical waste. The last decade has witnessed an increase in the number of health care facilities not only as a result of demographic development but mainly due to aid from international commitment to eradicate and control many infectious diseases. This has led to a concomitant increase in medical waste generated (Doumstap, 2014). Efforts to manage such wastes have differed between countries, the worse scenario being in developing countries where such wastes are handled haphazardly (Pruthvish et al., 1999; Harhay et al., 2009; Walkinshaw, 2011) with no systematic management of healthcare waste. In many developing countries, regulations governing safe disposal of healthcare waste is either lacking or poorly enforced. In these countries, poor clinical waste management, and especially inefficient segregation, treatment and disposal method threaten the environment, occupational and public health and increases the potential for the transmission of blood borne pathogens (Solberg 2009, Babanyara et al., 2013). An assessment by WHO revealed that in twenty two developing countries, the proportion of healthcare facilities that do not practice proper healthcare waste management ranges from 18 to 64% (WHO, 2004). In the African continent, solid medical waste management in most countries is substandard. In a recent review of solid medical waste management in Africa (Udofia et al., 2015), only 30% of countries met half of WHO's recommendations on medical waste management (Chartier et al., 2014), with the greatest compliance recorded on daily collection of waste from points of generation (100%). In addition to the fact that waste is never segregated and poorly handled in these countries, uncontrolled and sub-standard burning is widely practiced creating additional environmental problems including emission of toxic air pollutants (particularly dioxin) and heavy metals which might be present in gaseous and solid by-products (Pruss et al., 1999). Sound management of medical waste is highly necessary to protect human and environmental health.

This involves reducing the generation of hazardous waste, strictly controlling the storage, transport, treatment, reuse, recycling, recovery and final disposal of wastes (UNEP, 2000). With the growing concern on medical waste management, some developing countries have recently implemented interventions that have improved their waste management practices (Kumar et al., 2015; Tabash et al., 2016; Awodele et al., 2016).

Although, there is very limited information on health care waste management in Cameroon, few studies conducted report medical waste management as a challenge in both primary and tertiary care facilities (Doumstap, 2014). Because resources allocated for healthcare are limited, health care waste management has received less attention and priority than it deserves. Most healthcare facilities lack an incinerator and in some it is broken down and non-functional. Waste is burnt in pits situated within the facility. Burning in waste pits releases toxic gases into the air that could endanger the ecosystem (Manga et al., 2008; Muchungong, 2010). In the Northwest region of Cameroon, poor waste management practices observed in some health care facilities has been attributed to lack of sufficient awareness on environmental and public health impacts of poor clinical waste disposal (Muchungong, 2010) and most health workers were not aware of the existence of policy-national or international- on safe clinical waste management. Another study (Muluken et al., 2013), reported that the working conditions of waste pickers in health facilities are precarious and this endangers not only their health but also that of their families. Although, resources are scarce in Cameroon like in most developing countries, there is need to prioritize medical waste management to prevent future use of scarce resources to treat health related problems arising from poor medical waste management.

METHODS

Study area

This study was conducted in Kumbo East and Kumbo West health districts in the North West region of Cameroon. Kumbo, the second largest town in North West Cameroon and capital of Bui Division is located 110 km away from Bamenda, capital city of the North West region (Figure 1). The town of Kumbo has a population of over 100,000 inhabitants with a female dominance of 52%. It shares boundaries with Nkum-Mbam in the North, Mbiame in the East, Oku-Noni in the West and Dzekwa in the South. It enjoys a tropical climate common to most parts of Cameroon with two seasons: the dry and rainy seasons. Its geographical coordinates in decimal degrees (WGS84) are: Latitude 6.200 and Longitude 10.667.

With regards to health care delivery, Kumbo has two health districts: Kumbo East and Kumbo West, with 30 health areas and a

*Corresponding author. E-mail: gillianlan2002@yahoo.com. Tel: +237675459092

Author(s) agree that this article remain permanently open access under the terms of the [Creative Commons Attribution License 4.0 International License](https://creativecommons.org/licenses/by/4.0/)

total of 52 health facilities. These health facilities comprise public (state-owned=25), lay private (owned by individual=5), community-owned (2) and confessional (owned by religious body=20). Kumbo East has 20 health areas with 34 health facilities while there are 10 health areas in Kumbo West with 18 health facilities.

There are two main hospitals in Kumbo both of which have training schools for health personnel, and a range of departments offering services like: general consultation, eye care, dental care, surgical services, X-ray/ultrasound, pharmaceutical services, laboratory services, paediatric services, gynecological, obstetric services, family planning, tuberculosis treatment units, vaccination and antenatal care, malaria prevention among others. One of the hospitals in addition has the only Cardio-Surgical Centre in Central/West Africa which offers cardiac surgery, diagnostic and interventional catheterization, coronary angiography, diagnostic coronarography, pace maker double and single chamber since 2009.

Kumbo Municipality in the North West region of Cameroon has experienced a rapid increase in the number of healthcare facilities as well as the types of health care services rendered in the last few years, resulting in an increase in the amount and diversity of waste generated from these facilities. Due to the growing trend of biomedical services in Kumbo, there is need for a comprehensive evaluation of medical waste management and disposal practices in the area, in order to inform policy on the planning for an effective and sustainable waste management program.

Study design

A cross sectional study with convenience sampling used to select health facilities for the study was conducted from September to December 2013. The choice of sampling method was to ensure that the two major hospitals in study area; one in Kumbo West and another in Kumbo East were included due to the broad range of healthcare services they offer. From a total of 52 health facilities in the study area, 16 were selected from Kumbo East and 14 from Kumbo West. If a chosen health area had all four categories of health facilities, all were selected in order to have a category representation. A minimum of 2 health facilities were selected from each selected health area. A total of 14 public, 8 confessional, 6 lay private and 2 community-owned health facilities were selected. Data on waste management practices was collected by questionnaires, field observations and interviews with randomly selected health personnel who were available at the time of the study.

Study population

All categories of staff in the selected healthcare institutions such as administrators, doctors, nurses, laboratory technicians, pharmacy attendants and waste handlers were targeted. Personnel from all the departments were sampled so as to have a broad range of the medical waste types generated and management practices. Healthcare facilities in Kumbo East and Kumbo West health districts and their personnel directly or indirectly involved in medical waste management and disposal who gave consent to participate were recruited for the study.

Data collection

The instruments used in generating primary data included questionnaires administered to health personnel. Structured interview forms were used to assess medical waste management

practices of health facilities. Observations during field visits were guided by an observation checklist so that key aspects to be evaluated could be noted down in a systematic manner.

Ethical considerations

Ethical clearance approving the study was obtained from the Catholic University of Cameroon (CATUC), Institutional Review Board (Ethics Reference N^o: 021/HEPM/CATUC- IRB/13) while administrative clearance was issued by the Regional Delegation of Public Health for the North West region. Authorization to access health facilities in the two districts was obtained from the District Medical Officers of Kumbo East and Kumbo West health districts. For non-public health facilities, permission was obtained from the respective authorities concerned. Study participants were required to sign an informed consent form before participating in the study. Identification codes were used instead of names of participants on questionnaires and participation was voluntary.

Data analysis

Data was analyzed using SPSS software package (V 17.0). The Chi square test and percentages were used and P-value < 0.05 was considered significant.

RESULTS

Characteristics of study participants

A total of 260 participants were involved in this study. Nurses made up the highest number of participants, 154 (59.2%), followed by laboratory technicians, 34 (13.1%) and employed waste handlers (EWH), 27 (10.4%), while administrators, 6 (2.3%) were the least. Participation by gender reflected a male dominance of 58.8% (Table 1).

Personnel knowledge on medical waste management

Among the study participants, those aware of the existence of a National Policy Guide (NPG) on medical waste management were mainly administrators (66.7%) and nurses (61%) and the least were pharmacy attendants (6.9%) (Figure 2).

There was no significant difference in awareness on the existence of a NPG with respect to category of personnel (P-value = 0.134). Most of those aware of the existence of a NPG were from community health facilities (66.7%), followed by personnel from confessional health facilities (45.1%) while the least were from public health facilities.

Only 2/30 (6.67%) health facilities (all public), had a copy of the National Policy Guideline on medical waste management to guide their medical waste management practices. One of the main hospitals had an internal waste management manual designed by its authorities.

None of the participating health facilities kept records of its medical waste management practices.

Among our participants, those who had aspects of

Table 1. Characteristics of the study participants.

Characteristic	Number	Percentage
Gender		
Male	153	58.8
Female	107	41.2
Total	260	100
Profession		
Nurse	154	59.2
Pharmacy Attendant	29	11.2
Doctor	10	3.8
Laboratory Technician	34	13.1
Administrator	6	2.3
Employed Waste Handler (EWH)	27	10.4
Waste Management included in Curriculum during training		
Nurse	105	68.2
Pharmacy Attendant	19	65.5
Doctor	5	50
Laboratory Technician	32	94.1
Administrator	4	66.7
Employed Waste Handler (EWH)	13	48.1
Attended seminar/workshop on waste management		
Nurse	58	37.7
Pharmacy Attendant	8	27.6
Doctor	2	20
Laboratory Technician	8	23.5
Administrator	4	66.7
Employed Waste Handler (EWH)	13	48.1

waste management included in their curriculum during the period of their training were mostly laboratory technicians (94.1%), followed by nurses (68.2%) while the least were EWH (48.1%) (Table 1). The difference was significant ($P=0.024$). Some personnel attended seminars/workshops on waste management and these were mainly administrators (66.7%), followed by EWH (48.1%) while the least were doctors (20%) (Table 1). The difference was statistically significant ($P=0.035$).

Opinion of waste handlers on exposure to risk of infection

All health personnel (260/260, 100%) were aware that medical waste is risky to public health. Overall, only 86.2% considered EWH more exposed to infection from healthcare waste as compared to other categories of health personnel. With regard to personnel's opinion, all employed waste handlers (100%) noted they were more at risk of infection. This was followed by pharmacy attendants (93.1%) while the least were administrators

(66.7%) (Figure 3).

Types of waste generated from healthcare facilities

Waste generated from health facilities was extremely heterogeneous comprising pathological waste, pharmaceutical waste, radioactive waste, chemical waste, sharps, infectious and domestic waste (Table 2).

Apart from radioactive waste and waste from surgical departments generated by the two main hospitals and some CMAs due to a broader range of their services, medical waste commonly generated in all healthcare facilities included: used syringes, gloves, wound dressings, empty drip sets, placenta, empty vials, and empty drug containers (plastics and cartons).

Waste management and infection prevention practices.

The use of personal protective equipment varied among

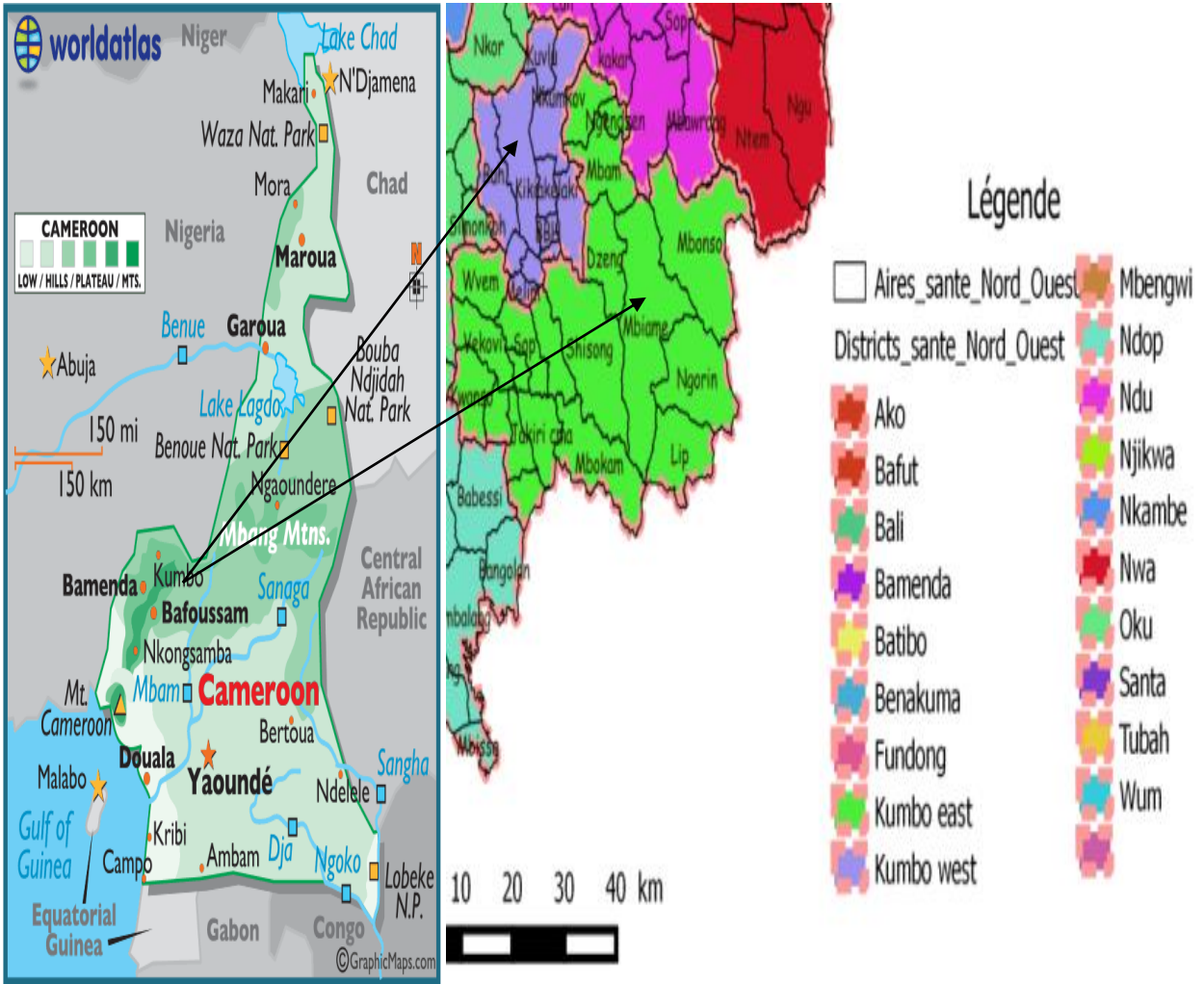


Figure 1. Map of the study area.

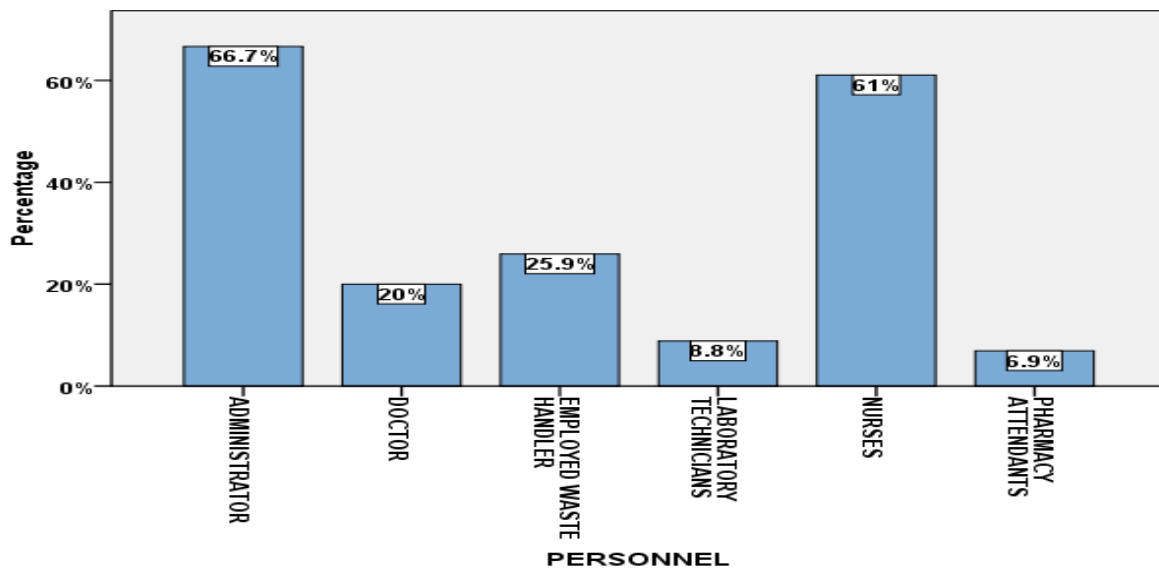


Figure 2. Awareness on the existence of a National Policy Guideline on Medical Waste Management.

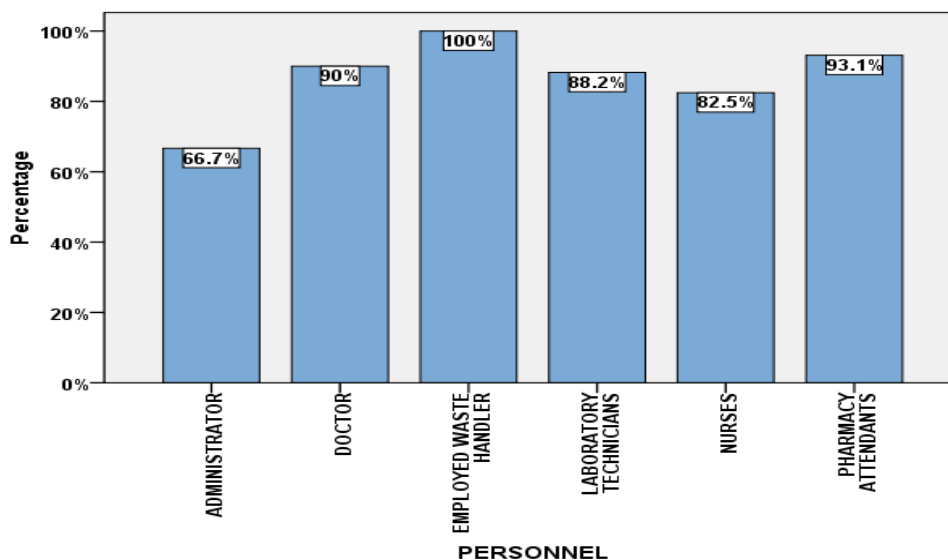


Figure 3. Opinion on employed waste handlers being at highest risk of exposure to infection from medical waste. The difference was not significant ($P=0.082$)

Table 2. Types of waste generated from health facilities of Kumbo East and Kumbo West.

Waste category	Types
Pathological waste	Foetuses, placenta, human tissues, body fluids, faeces, urine, sputum, vomit.
Pharmaceutical waste	Expired drugs, empty vials, empty drug containers (bottles/cartons).
Radioactive waste	Ampoules, damaged films, absorbent paper, liquids from radiotherapy.
Chemical waste	Batteries, laboratory reagents, stocks disinfectants, expired and/or broken thermometers.
Sharps	Needles, syringes, infusion sets, scalpels, pipettes, knives, blades, broken bottles.
Infectious waste	Sputum, vaginal smear (VS) swaps, used cotton, gloves, specimen containers, test strips, soiled gauze, bandages, wound dressings, agar from culture samples, culture plates, HIV strips.
Domestic waste	Papers, remains of food, other organic wastes.

personnel, with the highest level of use (100%) observed among EWH and laboratory technicians, while the lowest (69%) was among pharmacy attendants (Table 3). There was no significant difference in the use of PPE among personnel (P -value = 0.364). Gloves (100%) were the most common form of PPE used by waste handlers, followed by aprons (85.2%) and boots (55.6%). None of the waste handlers used face mask while only 48.1% used nose mask. On further investigation, it was realised that the majority of them used examination gloves (55.6%), while only 44.4% used utility gloves. With vaccination being another form of protection from certain infectious diseases, the authors investigated if healthcare workers had been vaccinated against some infections they are exposed to as a result of the nature of their job. Vaccination was against three types of infections: tetanus (63%), meningitis (51.9%) and hepatitis B (29.6%) (Table 3). These vaccines were received mostly during immunization campaigns. About 80% of medical personnel had

been vaccinated against at least one of the above mentioned diseases. There was a significant difference in the number of participants that had been vaccinated ($\chi^2=9.792$, P -value < 0.05).

We investigated if personnel who generate infectious waste (doctors, nurses and lab technicians) disinfect such waste prior to disposal. Disinfection was practiced mainly by laboratory technicians (67.6%) and least by doctors (20%) (Table 3). The difference among these categories of staff was significant ($P=0.0359$). Disinfection of infectious waste was widely practiced by personnel from lay private facilities (56.3%), followed by those from public facilities (27.1%) but was not conducted in community health facilities. There was no significant difference in this practice with regards to the type of health facility ($P=0.061$). Segregation of waste generated prior to disposal was practiced by all EWH (100%) (Table 3).

This was followed by laboratory technicians (88.2%).

Table 3. Waste management and infection prevention practices.

Waste Management Practice	Response	
	Yes	No (%)
Do you use PPE		
Doctors	90	10
Employed waste handlers	100	0
Laboratory technicians	100	0
Nurses	98.1	1.9
Pharmacy Attendants	69	31
Total	91.4	8.6
Disinfection of Waste		
Doctors	20	80
Lab Technicians	67.6	32.4
Nurses	26.6	73.4
Total	38.1	61.9
Do you segregate Waste		
Doctors	80	20
Employed waste handlers	100	0
Lab Technicians	88.2	11.8
Nurses	81.8	18.2
Pharmacy attendants	0	100
Total	70	30
Vaccination among employed waste handlers		
Hepatitis B	29.6	70.4
Tetanus	63	37
Meningitis	51.9	48.1
Total	48.2	51.8
Injuries sustained from infected objects		
Nurses	32	68
Lab technicians	23.5	76.5
Doctors	11	89
Employed waste handlers	11	89
Total	14.55	85.45

Segregation was not practiced by pharmacy attendants (0%). There was a significant difference between personnel who segregated waste and those who did not ($P=0.006$). Segregation of waste was practiced mainly by staff of confessional health facilities (85%), followed by public facilities (52.1%). However, this practice was absent in community health facilities (0%). All health facilities had waste bins (Figure 4) for discarding waste. Only 80% of them had lids and they were not colour-coded. None of the participating health facilities lined waste bins with plastic bags or biohazard bags during the study period. However, in one of the main hospitals, it was reported that plastic bags were used when available. The use of safety boxes for disposal of sharps was

practiced in all health facilities.

Transportation and final disposal of healthcare waste

Transportation of medical waste from point of generation to final waste disposal site was mostly done by hand-lifting (96.70%). Use of trolleys was seldom and observed only in one health facility (3.33%). All health facilities had a permanent site for the disposal of medical waste. Only 4 (13.33%) health facilities used incinerators. The rest (86.67%) had excavated pits for dumping waste and ash after burning (Figure 5).

Distance of waste disposal sites from health facilities



Figure 4. Provisions for waste storage in health facilities (a) Waste bin with lid (b and c) unlined waste bins without lids.



Figure 5. Final waste disposal sites observed in study site: (a) Constructed and fixed Incinerator (b) Mobile incinerator (c and d) Unprotected Medical Waste pits (e) Protected Medical Waste pit.

ranged between 5 and 400 m (± 54.57 m). Also, observations showed that 9 (30%) had their disposal sites located 0-10 m from the premises. Only 1 had its waste disposal site located about 400 m away. In addition, most health facilities (73.3%) did not protect their waste pit from scavengers (Figure 5). Thirty-five (13.5%) respondents reported human visits (scavengers), while 52 (20%) reported animal visits to these dump sites.

Waste disposal was mainly by EWH in 22/30 (73.3%) health facilities. However, in facilities that did not employ a waste handler, other personnel such as nurses, doctors

and night watch men were involved in waste handling.

DISCUSSION

Healthcare waste management is still presenting a series of challenges in developing countries because it has been given little attention. In Cameroon, medical waste management is a serious concern and therefore there is need for an evaluation of current management practices to enable planning, for better management of medical waste.

Only 68.5% of our participants had medical waste management in their curriculum during their training with laboratory technicians (94.1%) being the highest and the least were EWH (48.1%). Most of our participants received training compared to health care workers in Northwest Ethiopia (Muluken et al., 2013). With regards to in-service training on medical waste management through seminars or workshop, only 35.8% participated. This low percentage could be due to limited budgetary allocation which does not permit organization of such events. A recent study by Kumar et al. (2015) suggested an intensive healthcare waste management training as an effective intervention for improving knowledge, attitudes and practices among healthcare workers regarding healthcare waste management. Other studies (Kumar et al., 2016; Abah, 2011) have also indicated regular training of health care workers on waste management to have a great role on their practices on waste management.

Contrary to Ramokate and Basu (2009) who reported 46% of participants being aware of the existence of manual on safe management of medical waste, only 43.1% of participants were aware of the existence of NPG on medical waste management with the highest level of awareness being observed among administrators (66.7%). Our level of awareness was higher than the 20.8% reported by Muluken et al (2013) and Mochungong et al. (2010) reported similar findings in the Northwest region of Cameroon. Only 6.6% of health facilities had a copy of the guide and one facility had a waste management guide designed by its authorities. None of the facilities kept record of its waste management practices as opposed to a similar study in South Africa, where accessibility of medical waste management documents was 91% (Ramotake and Basu, 2009). The low accessibility recorded in our study was associated with poor supervision and enforcement by the responsible authorities.

The extreme heterogeneity of medical waste composition (Table 2) confirms reports made in similar studies elsewhere (Bassey et al., 2006; Hassan et al., 2008; Debere et al., 2013) thus, creating more challenges in its management. Segregation of waste at source reduces the management and cost of treatment in addition to public health risks and environmental pollution. Overall, these findings reveal that 70% of study participants segregated waste which contradict the report of Mochungong et al. (2010), in which segregation was observed in all hospitals studied in the Norhtwest region of Cameroon. The difference which could be due to the fact that our study involved more health facilities (30) than studied by Mochungong et al. (2010).-Segregation was practiced mainly by staff of confessional facilities and was absent among staff of community health facilities.

Disinfection of infectious waste was practiced by 38.1% of participants, with this practice observed mainly among laboratory technicians (67.6%) which could be due to the

fact that, most laboratory technicians had waste management included in their curriculum during their period of training. As with segregation, none of the community health facilities disinfected their waste. In a recent study on Ethiopia (Debere et al., 2013) neither waste segregation nor disinfection was reported. At the point of generation, the waste was discarded in plastic bins placed outside the wards and only 80% of them had lids. These bins were not lined with biohazard bags neither were they colour-coded. However, one hospital reported using biohazard bags when they are available. Bio-hazards signs were not seen on waste bins, although in one of the major hospitals instructive posters showing the type of waste to be discarded in each of the waste bins were fastened to the bin; thus, acting as a major step towards an effective healthcare waste segregation. There was also adequate provision and use of safety boxes for sharps in all health facilities.

The gloves used by EWH were mostly examination gloves which are inappropriate, as it could not only tear easily exposing them to infection but could not offer protection against injury. Only 44.4% of them used utility gloves. None of the waste handlers used face mask, while only 48.1% used nose mask. Some of the waste handlers did not put on face masks during burning or incineration thus exposing themselves to resulting dangerous emissions. These findings do not comply with the Occupational Safety and Health Administration (OSHA, 2016) recommendations that, appropriate PPE must be used to reduce risk or worker exposure, with the employer making readily available and at no cost to employees, appropriate specialized clothing or equipment to protect exposure to blood and other potentially infectious bacteria. Our findings confirm the report of Mochungong (2010) that the working conditions of waste pickers in Cameroon are poor. Vaccination of waste handlers against infections was low: 63% for tetanus, 51.1% for meningitis and 29.6% for hepatitis B and these vaccines were received at no cost during vaccination campaigns. This shows that other required vaccines for which there was a cost were not taken.

Waste disposal was on-site in all health facilities and waste bins were transported manually by hand-lifting to the final disposal site except in one facility where trolleys were used. Waste handlers interviewed reported waste spills during transportation as some of the bins had no lids. This could lead to spread of infectious agents. In 26 (86.7%) health facilities waste disposal was by open burning in pits and all the wastes whether segregated or not was dumped into these pits. Considering the fact that these pits were located within 400 m from the facility, burning produced and released smoke and dangerous emissions to the air causing air pollution and exposing people to serious health risks. Because all the wastes (wet and dry) were dumped in the pit, combustion was incomplete. Scavengers (humans and animals) were reported visiting some of these pits and thus were

exposed to hazardous waste and infectious materials following contact or injuries and could spread infection in the community through the sale of materials recovered from the pits. Contrary to a study in Ethiopia (Debere et al., 2013) in which the disposal mechanism of health facilities was incineration, only 4 (13.4%) facilities in our study site used incinerators. Although, incinerators are alternative technology for destroying high volume medical wastes particularly when resources are limited (Chartier, 2014), there is concern on its environmental impact as most of them lack air pollution control devices (Fedowosi et al., 2013). Incinerators in our study site were locally constructed with brick and did not meet the guidelines and contributed to air pollution endangering the lives of the nearby population. Ash from these incinerators is disposed in pits and could leach into the ground polluting underground water.

Limitations of study

The authors did not quantify the amount of waste generated per bed per day in the study facilities. As this study was conducted during the day, staff on night duty involved in waste management could not be reached and hence could not participate in the study. Distances between some health facilities could not permit a cross section of waste handlers to be included in the study as some left the health facilities immediately after their cleaning chores in the morning.

CONCLUSION

Waste management practices in the study site did not meet standard practices. There is an urgent need for proper medical waste management in Kumbo East and Kumbo West to minimise threats to human health and the environment. For this to be achieved, there is need for increased budgetary allocation to health facilities to ensure training of personnel on waste management, and purchase of PPE and required materials for safe waste handling, storage, transportation and purchase of high temperature incinerators. Regular supervision and enforcement of policy on medical waste management is paramount.

Disclosure of conflict of interest

The authors disclose that there is no conflict of interest.

ABBREVIATIONS

EWB : Employed Waste Handler
PPE : Personal Protective Equipment
WHO: World Health Organization

NPG : National Policy Guideline
CMA: Centre Medical d'Arrondissement
OSHA: Occupational Safety and Health Administration

ACKNOWLEDGEMENTS

The authors are grateful for the useful contributions of the management and personnel of health facilities that participated in this study. They are also grateful for the contributions made by Ndong Ignatius. C, Kofete Mercy. A, Chenjoe Joseph. N, and Kinga Bertila.

REFERENCES

- Awodele O, Adeoye AA , Oparah AC (2016). Assessment of medical waste management in seven hospitals in Lagos, Nigeria. *BMC Public Health* 16:269.
- Abah SO, Ohimain EI (2011). Healthcare waste management in Nigeria: A case study. *J. Public Health Epidemiol.* 3(3):99-110.
- Babanyara YY, Ibrahim DB, Garba T, Bogoro AG, Abubakar MY (2013). Poor medical waste management practices and its risks to human health and the environment: a literature review. *Int. J. Environ. Chem. Ecol. Geol. Geophys. Eng.* 7(11):780-787.
- Bassey BE, Benka-Coker MO, Aluyi HSA (2006). Characterization and management of solid medical wastes in the Federal Capital Territory, Abuja Nigeria. *Afr. Health Sci.* 6(1):59-63.
- Chartier Y, Emmanuel J, Pieper U, Prüss A, Rushbrook P, Stringer R, Townend W, Wilbum S, Zghondi R (eds) (2014) . *Safe management of wastes from healthcare activities (2nd edn)*. Geneva, Switzerland: WHO Press Geneva, Switzerland. P 308.
- Doumtsop TJG (2014). Health care waste management: a multi speed development in the sub-Saharan African region. *Pan Afr. Med. J.* 17:305.
- Debere MK, Gelaye KA, Alamdo AG, Trifa ZM (2013). Assessment of the health care waste generation rates and its management system in hospitals of Addis Ababa Ethiopia, 2011. *BMC Public Health.* 13:28.
- Ferdowosi A, Ferdosi M, Mehrani MJ (2013). Incineration or autoclave? A comparative study in Isfahan hospitals waste management system (2010). *Mater. Socio-Med.* 25(1):48-51.
- Harhay MO, Halpern S, Harnay JS, Olliaro PL (2009). Healthcare waste management: a neglected and growing public health problem worldwide. *Trop. Med. Int. Health* 14(11):1414-1417.
- Hassan MM, Ahmed SA, Rahman KA, Biswas TK (2008). Pattern of medical waste management: existing scenario in Dhaka City, Bangladesh. *BMC Public Health* 8:36.
- Kumar R, Somrongthong R, Ahmed J (2016). Impact of waste management training intervention on knowledge, attitude and practices of teaching hospital workers in Pakistan. *Pak. J. Med. Sci.* 32(3):705-710.
- Kumar R, Somrongthong R, Shaikh BT (2015). Effectiveness of intensive healthcare waste management training model among health professional at teaching hospitals of Pakistan: a quasi-experimental study. *BMC Public Health* 15:81.
- Manga VE, Fortonb OT, Readd AD (2008). Waste Management In Cameroon: A New Policy Perspective? *Resources, Conservation And Recycling.* 52:592-600.
- Mochungong PI, Gulis G, Sodemann M (2010). Hospital worker's awareness of health and environmental impacts of poor clinical waste disposal in the northwest region of Cameroon. *Int J Occup Environ Health.* 16(1):53-59.
- Mochungong PI (2010). The plight of clinical waste pickers: evidence from the northwest region of Cameroon. *J. Occup. Environ. Health* 52(2):142-145.
- Muluken A, Haimanot G, Mesafint M (2013). Healthcare waste management practices among healthcare workers in healthcare

- facilities of Gondar town, Northwest Ethiopia. *Health Sci. J.* 7(3):315-326.
- Occupational Safety and Health Administration (OSHA) (2016). Employer Rights and Responsibilities Following a Federal OSHA Inspection. OSHA 3000-08R 2016. US Department of Labor.
- Pruthvish S, Gopinath D, Girish N, Jayachandra RM, Bineesha P, Shivaram C (1999). Towards safe management of health care waste in Bangalore City. *Bull. World Health Org.* 77(10):862-863.
- Prüss A, Giroult E, Rushbrook P (1999). Safe management of wastes from healthcare activities. World Health Organization (WHO), Geneva, Switzerland. P 230.
- Ramotake T, Basu D (2009). Healthcare waste management at an academic hospital: knowledge and practices of doctors and nurses. *South Afr. Med. J.* 99 (6):444-450.
- Solberg KE (2009). Trade in medical waste causes deaths in India. *Lancet.* 373:1067.
- Tabash MI, Hussein RA, Mahmoud AH, El-Borgy MD, Abu-Hamad BA. (2016). Impact of an intervention programme on knowledge, attitude and practice of healthcare staff regarding pharmaceutical waste management, Gaza. *Palestine Public Health* 138:127-37.
- Udofia EA, Fobil JN, Gulis G (2015). Solid waste management in Africa. *African Journal of environmental Science and Technology.* 9(3): 244-254.
- UNEP (2000). Minimizing hazardous wastes: A simplified Guide to the Basel Convention, France. GE 04-03062.
- Walkinshaw E (2011). Medical waste-management practices vary across Canada. *CMAJ.* 183(18):1307-1308.
- World Health Organisation (WHO)(2004). Preparation of National Healthcare Waste Management Plans in sub-Saharan Countries: A guidance Manual. P 88.



International Journal of Medicine and Medical Sciences

Related Journals Published by Academic Journals

- *Journal of Medicinal Plant Research*
- *African Journal of Pharmacy and Pharmacology*
- *Journal of Dentistry and Oral Hygiene*
- *International Journal of Nursing and Midwifery*
- *Journal of Parasitology and Vector Biology*
- *Journal of Pharmacognosy and Phytotherapy*
- *Journal of Toxicology and Environmental Health Sciences*

academicJournals